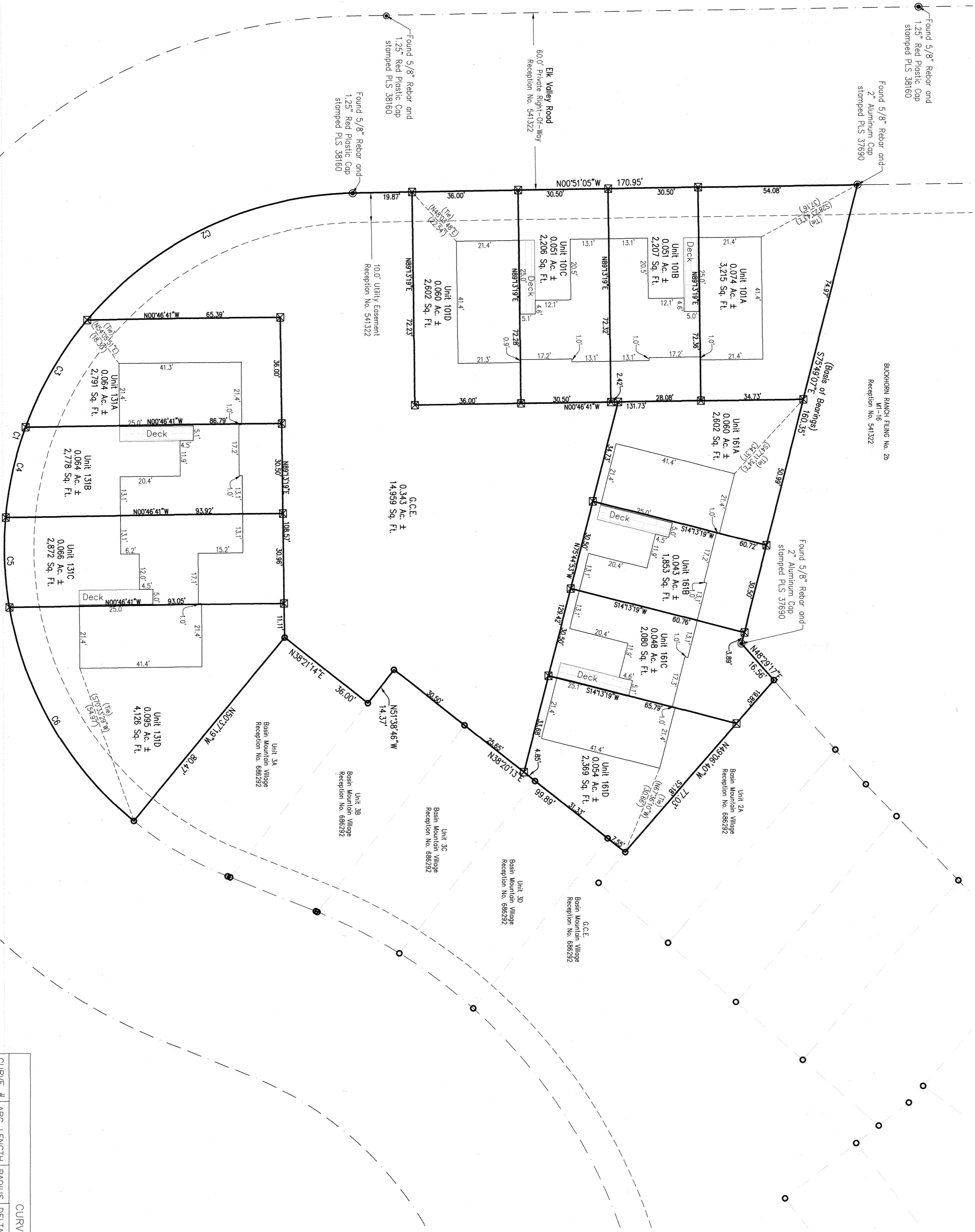


Amended Plat of Basin Mountain Village - Phase 2

Being a Re-Subdivision of Remainder Parcel M1-13, M1-14, M1-15, Basin Mountain Village
Situated within Section 7, Township 14 South, Range 85 West of the 6th Principal Meridian
Gunnison County, Colorado

LEGEND

- Found Monument as Described
 - Found 5/8" Rebar and 1.25" Red Plastic Cap PLS 38697
 - ⊠ Set 18" Long, 5/8" Diameter Rebar and 1.25" Red Plastic Cap PLS 38697
 - Adjoining Lot Line
 - Easement Line
 - Deck
- Abbreviations
Ac. = Acres
Sq. Ft. = Square Feet
G.C.E. = General Common Area



CURVE #	ARC LENGTH	RADIUS	DELTA ANGLE	CHORD BEARING	CHORD LENGTH
C1	292.24'	120.00'	139°46'15"	N70°44'12"W	223.36'
C2	102.96'	120.00'	49°08'33"	S25°25'51"E	99.83'
C3	41.60'	120.00'	19°51'47"	S59°56'31"E	41.39'
C4	31.90'	120.00'	15°14'00"	S77°29'25"E	31.81'
C5	30.60'	120.00'	14°26'31"	N87°55'20"E	30.51'
C6	85.67'	120.00'	40°54'24"	N59°49'53"E	83.87'

Gunnison County, CO
8/15/2023 1:24:32 PM
305
692327
Page 2 of 3
R 33.00 D (resid-c)

Revision	Date	By
1		
2		
3		
4		
5		
6		
7		
8		

Job No. 2021-424/02
Drawn By: [Signature]
Checked By: [Signature]
Title: Basin Park PH2 Plat.dwg
Date: 07/27/23

Basin Mountain Village - Phase 2
Gunnison County, Colorado

PROFESSIONAL LAND SURVEYOR

38697

PLS 38697

SGM

103 W. Tomichi Ave., Suite A
Gunnison, CO 81230
970.641.5355
www.sgm-inc.com

Graphic Scale
In U.S. Feet: 1" = 20'

Sheet No. **2**

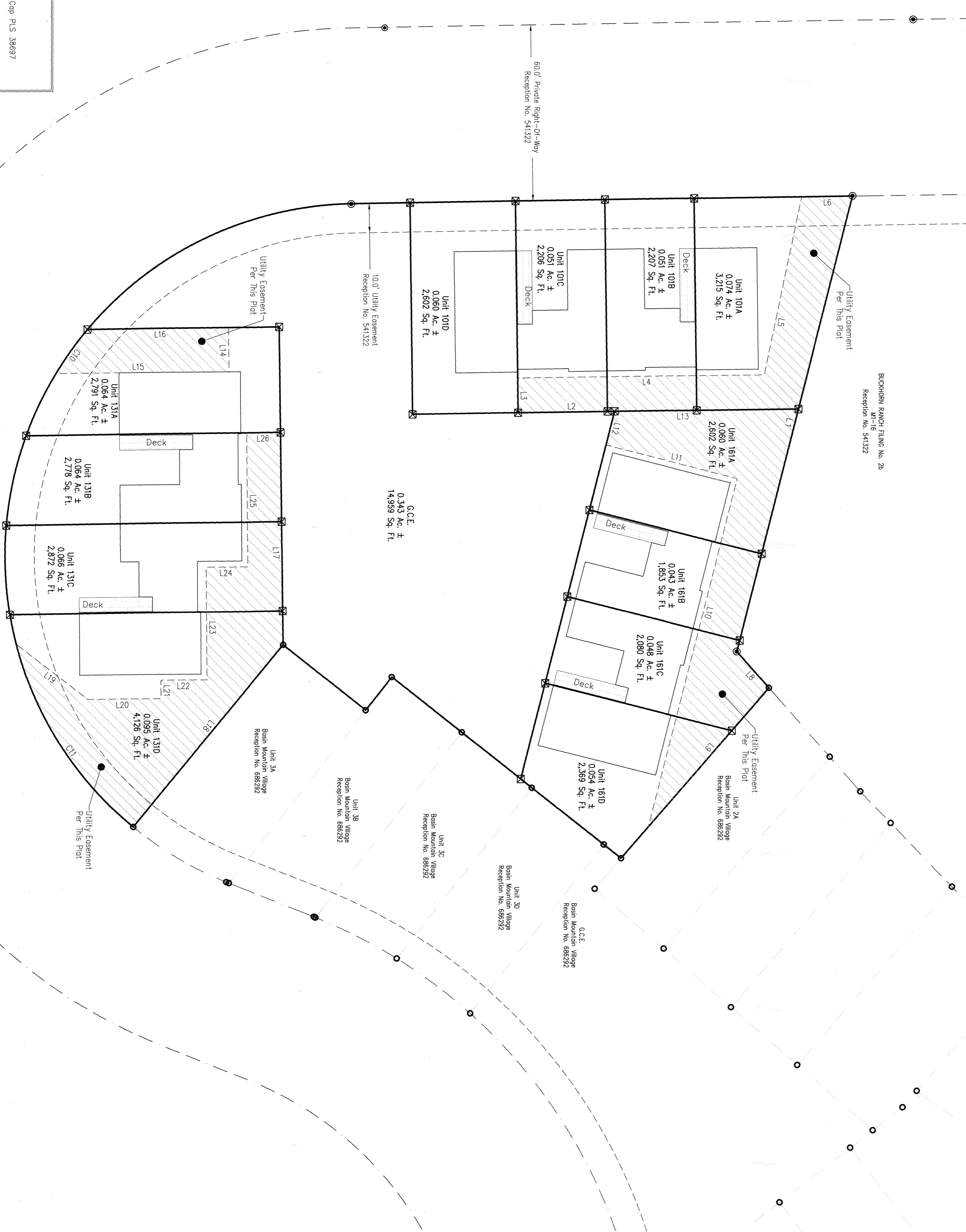
Amended Plat of Basin Mountain Village - Phase 2

Being a Re-Subdivision of Remainder Parcel M1-13, M1-14, M1-15, Basin Mountain Village
Situated within Section 7, Township 14 South, Range 85 West of the 6th Principal Meridian
Gunnison County, Colorado

LEGEND

- - Found Monument as Described
- - Found 5/8" Rebar and 1.25" Red Plastic Cap P.L.S. 38697
- ⊠ - Set 18" Long, 5/8" Diameter Rebar and 1.25" Red Plastic Cap P.L.S. 38697
- - Adjoining Lot Line
- - Easement Line
- - Utility Easement Per This Plat

Abbreviations
Ac. = Acres
Sq. Ft. = Square Feet
C.C.E. = General Common Area



LINE TABLE

LINE #	BEARING	DISTANCE
L1	S75°49'07"E	160.35'
L2	S00°46'41"E	95.73'
L3	S89°13'19"W	11.88'
L4	N00°44'47"W	84.19'
L5	N78°10'52"W	82.06'
L6	N00°51'05"W	17.35'
L8	S48°29'17"W	16.57'
L9	N49°08'40"W	62.85'
L10	S75°45'33"E	122.75'
L11	N1°15'07"E	46.28'
L12	S75°44'53"E	11.85'
L13	S00°46'41"E	62.81'
L14	N89°28'10"E	15.13'
L15	S00°31'50"E	59.03'
L16	N00°46'41"W	48.15'
L17	S89°13'19"W	72.57'
L18	N50°37'19"W	80.47'
L19	S37°40'19"W	30.92'
L20	S00°31'50"E	24.94'
L21	N89°28'10"E	6.30'
L22	S00°31'50"E	15.77'
L23	N89°28'10"E	38.48'
L24	S00°31'50"E	14.19'
L25	N89°28'35"E	45.75'
L26	S00°46'41"E	11.54'

CURVE TABLE

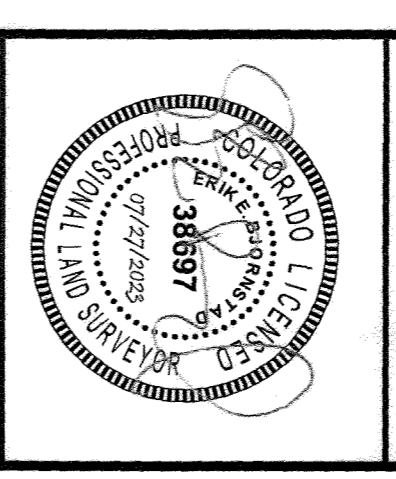
CURVE #	ARC LENGTH	RADIUS	DELTA ANGLE	CHORD BEARING	CHORD LENGTH
C10	18.48'	120.00'	8°49'33"	N54°25'24"W	18.47'
C11	75.41'	120.00'	56°00'14"	N57°22'47"E	74.17'

Gunnison County, CO
8/15/2023 1:24:32 PM
Page 3 of 3
R 23.00 D (Resubd)
692337

Revision	Date	By:

Job No: 2021-424-002
 Drawn By: MHT
 Date: 07/27/2023
 Approved: J.P.S.
 Title: BasinMountainPlat.dwg

Basin Mountain Village - Phase 2
Gunnison County, Colorado



SGM
103 W. Tomichi Ave., Suite A
Gunnison, CO 81230
970.641.5355
www.sgm-inc.com

Graphic Scale
In U.S. Feet: 1" = 20'