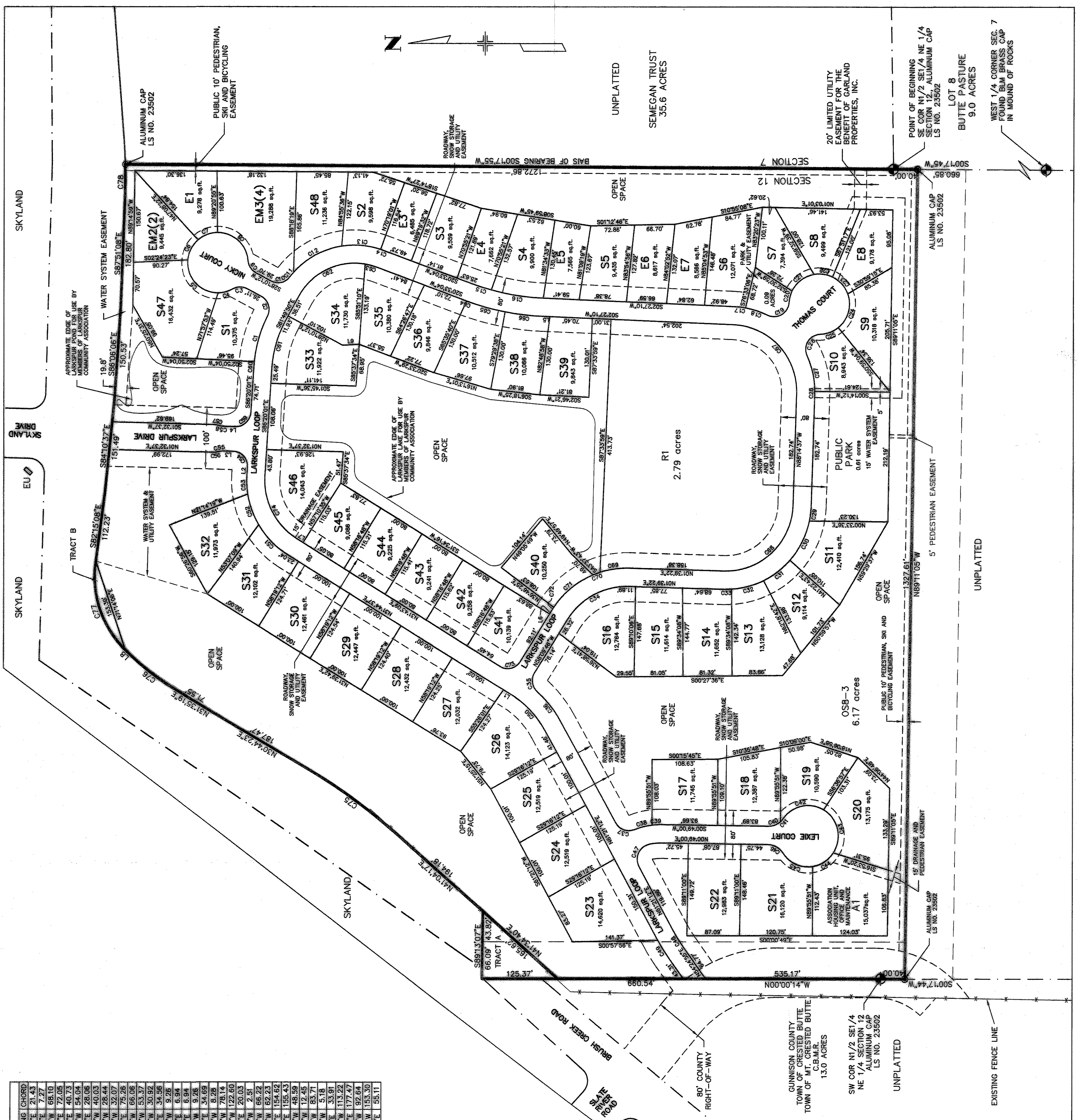


AMENDED PLAT OF  
**LARKSPUR**  
 LOCATED WITHIN THE  
 E1/2 NE1/4 SECTION 12  
 T14S, R86W, 6TH PRINCIPAL MERIDIAN  
 GUNNISON COUNTY, COLORADO

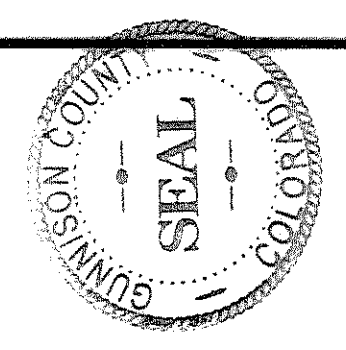


CURVE TABLE	CHORD BEARINGS	CHORD LENGTHS
C1	N21°14'37"E	21.30
C2	S88°20'01"E	13.61
C3	N01°32'37"E	16.61
C4	S02°27'41"W	12.17
C5	N83°02'46"W	7.71
C6	S89°59'46"W	11.00
C7	N02°02'46"E	11.00
C8	S89°59'46"E	11.00
C9	N02°02'46"W	11.00
C10	S89°59'46"W	11.00
C11	N02°02'46"E	11.00
C12	S89°59'46"E	11.00
C13	N02°02'46"W	11.00
C14	S89°59'46"W	11.00
C15	N02°02'46"E	11.00
C16	S89°59'46"E	11.00
C17	N02°02'46"W	11.00
C18	S89°59'46"W	11.00
C19	N02°02'46"E	11.00
C20	S89°59'46"E	11.00
C21	N02°02'46"W	11.00
C22	S89°59'46"W	11.00
C23	N02°02'46"E	11.00
C24	S89°59'46"E	11.00
C25	N02°02'46"W	11.00
C26	S89°59'46"W	11.00
C27	N02°02'46"E	11.00
C28	S89°59'46"E	11.00
C29	N02°02'46"W	11.00
C30	S89°59'46"W	11.00
C31	N02°02'46"E	11.00
C32	S89°59'46"E	11.00
C33	N02°02'46"W	11.00
C34	S89°59'46"W	11.00
C35	N02°02'46"E	11.00
C36	S89°59'46"E	11.00
C37	N02°02'46"W	11.00
C38	S89°59'46"W	11.00
C39	N02°02'46"E	11.00
C40	S89°59'46"E	11.00
C41	N02°02'46"W	11.00
C42	S89°59'46"W	11.00
C43	N02°02'46"E	11.00
C44	S89°59'46"E	11.00
C45	N02°02'46"W	11.00
C46	S89°59'46"W	11.00
C47	N02°02'46"E	11.00
C48	S89°59'46"E	11.00
C49	N02°02'46"W	11.00
C50	S89°59'46"W	11.00
C51	N02°02'46"E	11.00
C52	S89°59'46"E	11.00
C53	N02°02'46"W	11.00
C54	S89°59'46"W	11.00
C55	N02°02'46"E	11.00
C56	S89°59'46"E	11.00
C57	N02°02'46"W	11.00
C58	S89°59'46"W	11.00
C59	N02°02'46"E	11.00
C60	S89°59'46"E	11.00

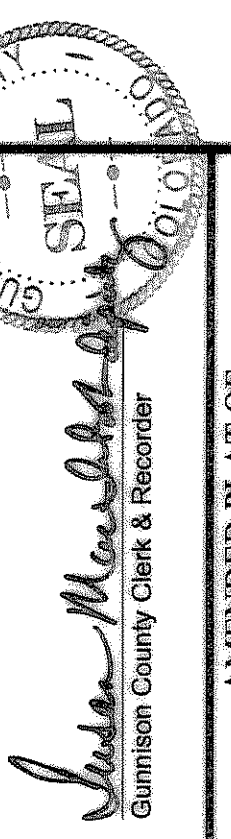
LINE	LENGTH	BEARING
L1	21.30	N21°14'37"E
L2	13.61	S88°20'01"E
L3	16.61	N01°32'37"E
L4	12.17	S02°27'41"W
L5	7.71	N83°02'46"W
L6	11.00	S89°59'46"W
L7	11.00	N02°02'46"E
L8	11.00	S89°59'46"E
L9	11.00	N02°02'46"W

BOARD OF COUNTY COMMISSIONERS APPROVAL  
 The within Corrected Plat of Larkspur is approved this 2nd day of March, A.D. 2008.

ATTEST:  
 [Signature]  
 GUNNISON COUNTY CLERK AND RECORDER



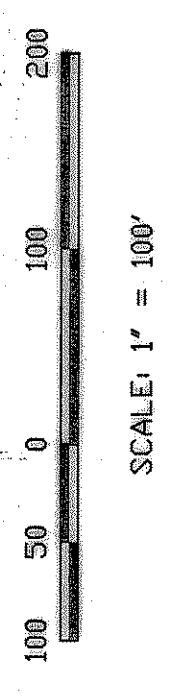
GUNNISON COUNTY CLERK & RECORDER'S ACCEPTANCE  
 This Corrected Plat was accepted for filing in the office of the Clerk & Recorder of Gunnison County, Colorado, on this 14 day of March, A.D. 2008.



AMENDED PLAT OF  
**LARKSPUR**  
 GUNNISON COUNTY, COLORADO  
 Prepared By: NCW & Associates, Inc.  
 P.O. Box 3688  
 2772 Gore St.  
 (970) 349-6384  
 PROJECT: 5075.00  
 DATE: 5/29/09  
 SHEET 1 OF 1

STATEMENT OF AMENDMENT  
 This Amended Plat removes original Lots EM1 and E2 to S47 and S48 respectively and removes the Essential Housing deed restrictions from S47 and S48.  
 Additionally the setbacks specified on the Amended Plat correct those on the original plat making them consistent with those specified in the Design Guidelines for Larkspur.

BUILDING SETBACKS  
 FRONT LOT CUL-DE-SACS (FROM ROADWAY EASEMENT) 10 FEET  
 FRONT LOT ALL OTHER (FROM ROADWAY EASEMENT) 0 FEET  
 SIDE LOT (ALL) 15 FEET  
 REAR (TYPICAL) 15 FEET  
 REAR (LOTS S33-S46) 20 FEET



SCALE: 1" = 100'

LAND SURVEYOR'S STATEMENT  
 I, Norman C. Whitehead, a registered land surveyor in the State of Colorado, certify that this Corrected Plat of Larkspur was made under my direction and control and that the original survey referred to herein was made under my direction and control and that this Corrected Plat and survey are true and correct to the best of my knowledge.  
 Dated this 30th day of March, A.D. 2008.



Norman C. Whitehead  
 Colorado P.L.S. No. 27739